

kebir.
GLOBAL



MODULAR HOME PRODUCTS CATALOGUE

Tailor-Made Solutions for You

Upgrade, expand, or build your dream hotel and tourism infrastructure with our expert solutions. Whether you're developing new homes, creating exclusive living spaces, or rapidly increasing your room capacity, we provide seamless, high-quality construction and renovation services.

Let's build the future of your hospitality business together!

Kebir Global – Innovative Modular Home Solutions

Kebir Global, a recognized leader in **modular construction**, offers a diverse portfolio of **modular solutions**. Our modular homes provide **swift, high-quality, and energy-efficient** living spaces tailored to both the **hospitality and residential sectors**.

Our **series** is the perfect choice for **hotels, resorts, and tourism infrastructure** looking for **quick expansion, modernization, or new construction**. Additionally, we cater to **individual clients** seeking premium, well-designed, and **cost-effective modular living spaces**.

Flexible & Scalable Modular Solutions

Our modular homes are available in **single or double module configurations**, ranging from **28m² to 115m²**, with options for **flat, shed, or gable roofs**. We offer customized solutions for **various user groups**, including **accommodations for 2, 4, 6, 8, or 12 people**.

Certified Quality & European Standards Compliance

Kebir Global's **state-of-the-art modular homes** meet the highest standards for **hotel, residential, and holiday buildings**, ensuring:

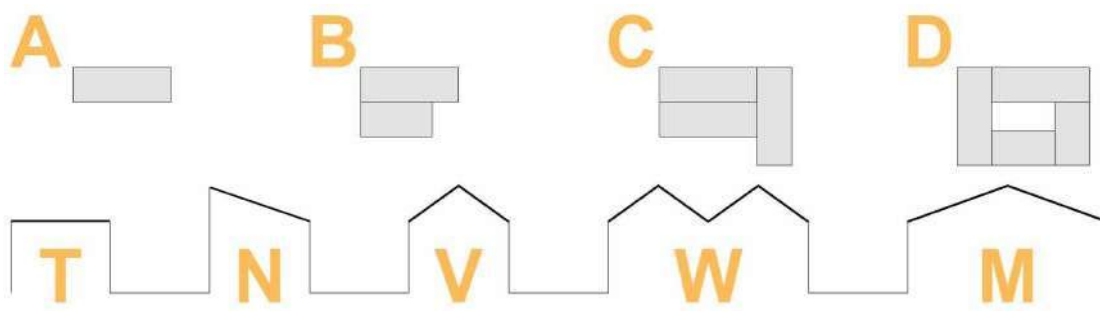
- ✓ **Fire Safety Compliance**
- ✓ **Thermal & Acoustic Insulation**
- ✓ **CE-Certified Structural Frames**
- ✓ **ISO 9001:2016 Certified Manufacturing**



kebir.
GLOBAL



TYPE OF ROOF AND BUILDING OF MODULAR HOMES



TECHNICAL SPECIFICATION

- Our modular homes are constructed with a robust steel frame.
- The wall layers consist of thermowood, a 5 cm air gap, a moisture barrier, OSB 3, 10 cm rock wool insulation, OSB 3, another moisture barrier, and MDF.
- The flooring includes 10 cm fiber cement, 10 cm rockwool, OSB, and MDF laminate parquet.
- The roof structure features stone wool, an EPDM membrane, OSB 3, insulation, and a standing seam roof system.
- Our homes are built in compliance with EU and EU Building Regulations.
- The windows are equipped with double or triple glazing, E-Low heat glass, and can be customized with either UPVC or aluminum frames, according to the customer's preference.
- The installation process can be either plug-and-play or site assembly, providing flexibility to meet the project needs.



Mini	Dimensions	Building area	Internal area
	3,98 x 6,98 x 3,93m	27,78 m ²	20,16 m ²



2+2



1



1



1

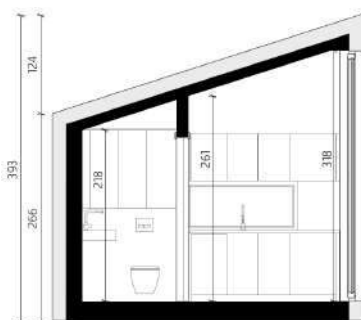
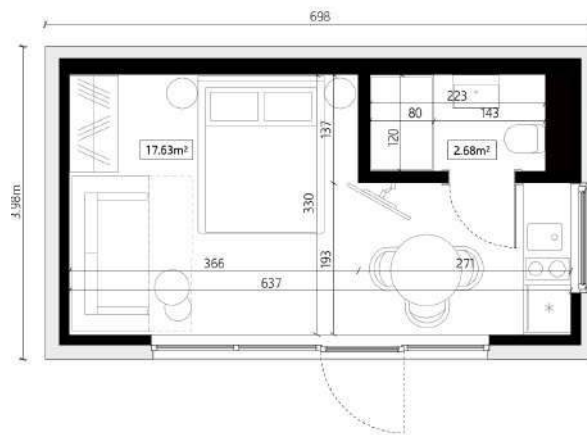

shed
roof

facade::
-wood
-steel

all-year
product


1

e.



room	area m ²
living room with kitchenette	17,63 m ²
bathroom	2,53 m ²
usable area = internal area	20.16 m ²

MIDI

Dimensions

3.60 x 9.60 x 3.90
m

Building
area

34.56 m²

Internal
area

31.90 m²



4+2



2



1



1



1



gable
roof



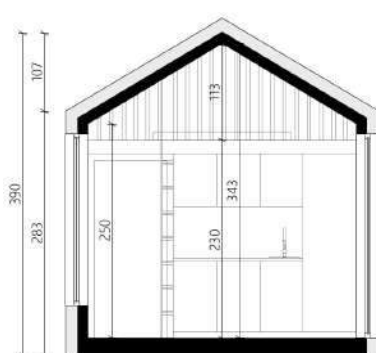
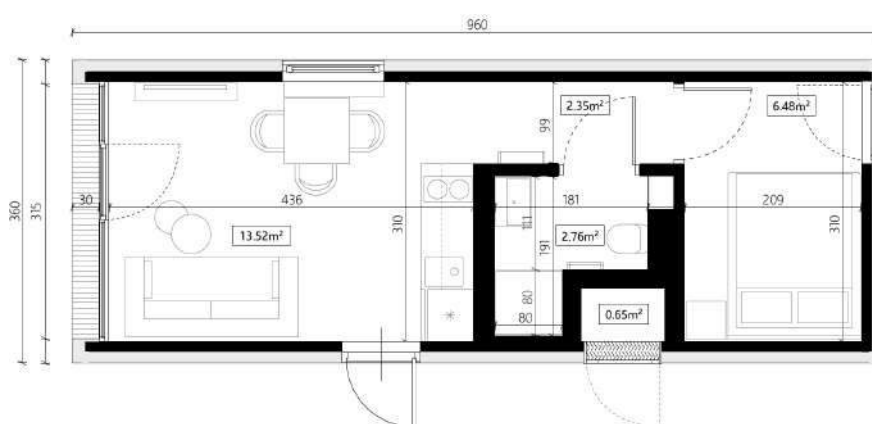
facade:
-wood
-steel



all-year
product



1



room	area m ²
living room + kitchenette	15.65 m ²
bathroom	2.76 m ²
bedroom	6.48 m ²
usable area	24.89 m ²
+ mezzanine	6.36 m ²
+ technical room	0.65
m ² internal area	31.90
m ²	

SUPER

Dimensions

**3.60 x 9.60 x 3.90
m**

Building
area

34.56 m²

Internal
area

32.57 m²



4+2



2



1



1



1



gable
roof



facade:
- wood
- steel
- gont

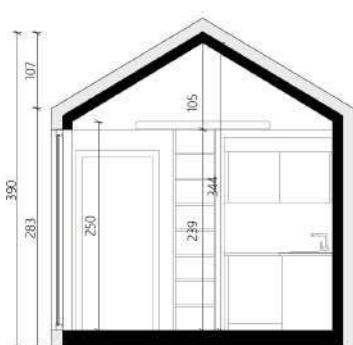
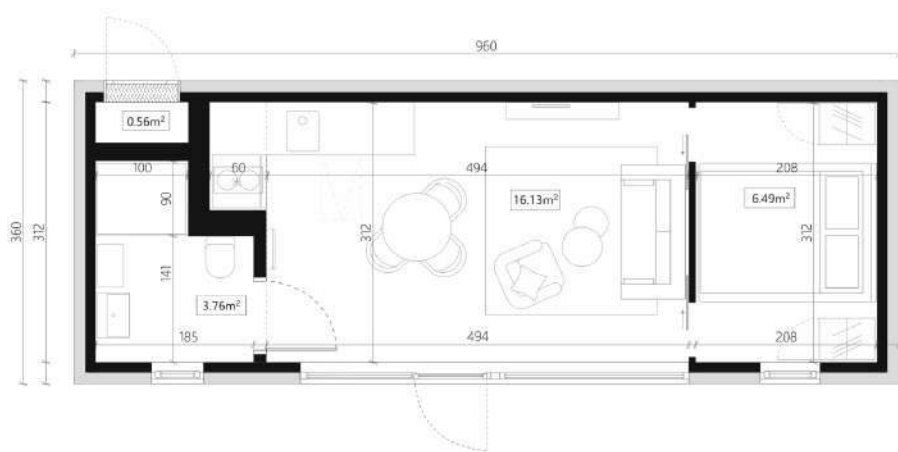


all - year
product



1

S



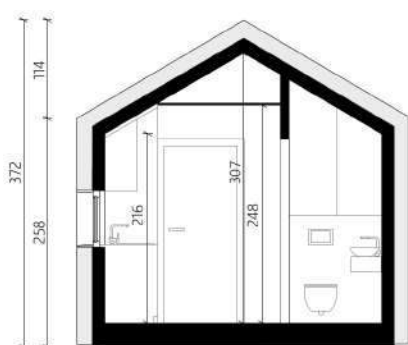
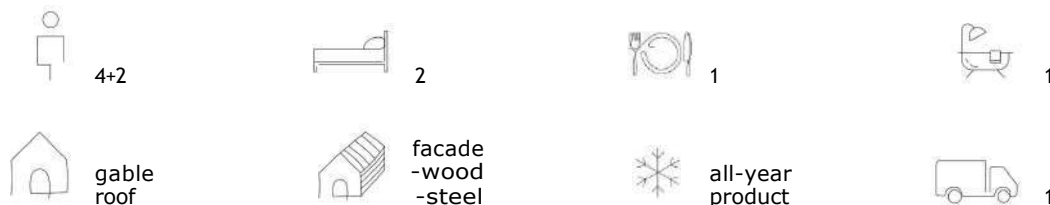
room	powierzchnia m ²
living room + kitchenette	16.00 m ²
bathroom	3.76 m ²
bedroom	6.51 m ²
usable area	26.27m
+ mezzanine	5.74 m ²
+ internal area	0.56 m ²
internal area	32.57 m ²

MAXI

Dimensions
3,71 x 12,27 x 3,72 m

Building area
45,52 m²

Internal area
35,18 m²



room	area m ²
living room	13,63 m ²
kitchenette	4,61 m ²
bathroom	2,06 m ²
bedroom 1	7,44 m ²
bedroom 2	7,44 m ²
usable area = internal area	35.18 m ²

MODI

Dimensions

4,05 x 12,27 x 3,14 m

Building area

49,69 m²

Internal area

39.93m²



2+2



1



1



1



flat
roof



facade:
-wood
-steel

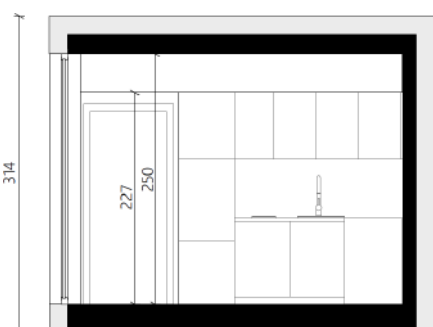
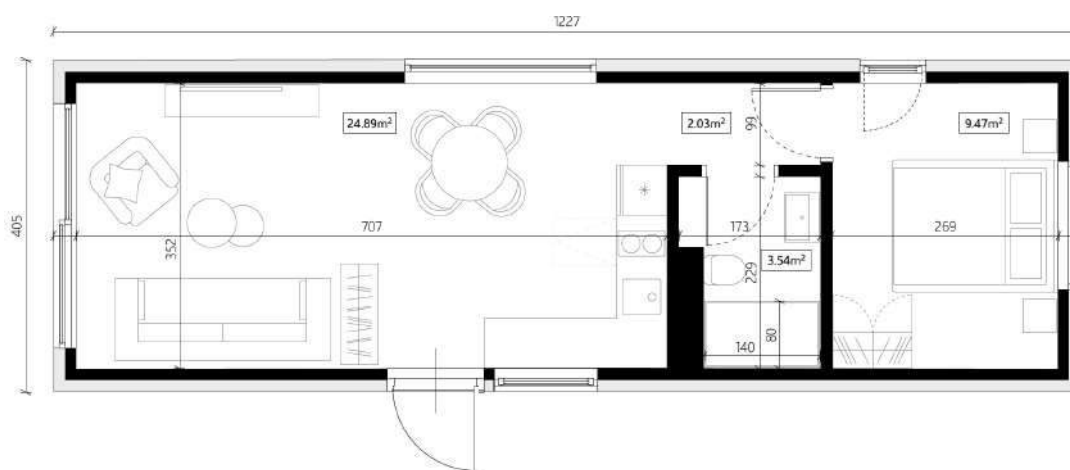


all-year
product



1

S



room	area m ²
living room with the kitchenette	24,89 m ²
hall	2.03 m ²
bathroom	3,54 m ²
bedroom	9.47 m ²
usable area = internal area	39.93 m ²

BECKY
Dimensions
4,13 x 15,70 x 4,16 m
Building area
64,84 m²
Internal area
63,62 m²

4+2

1

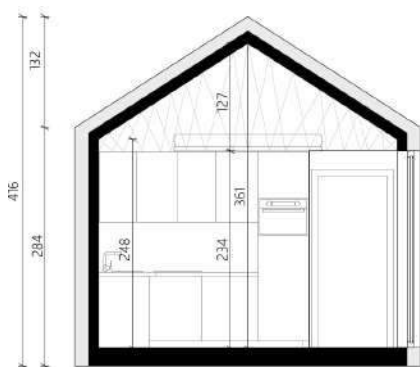
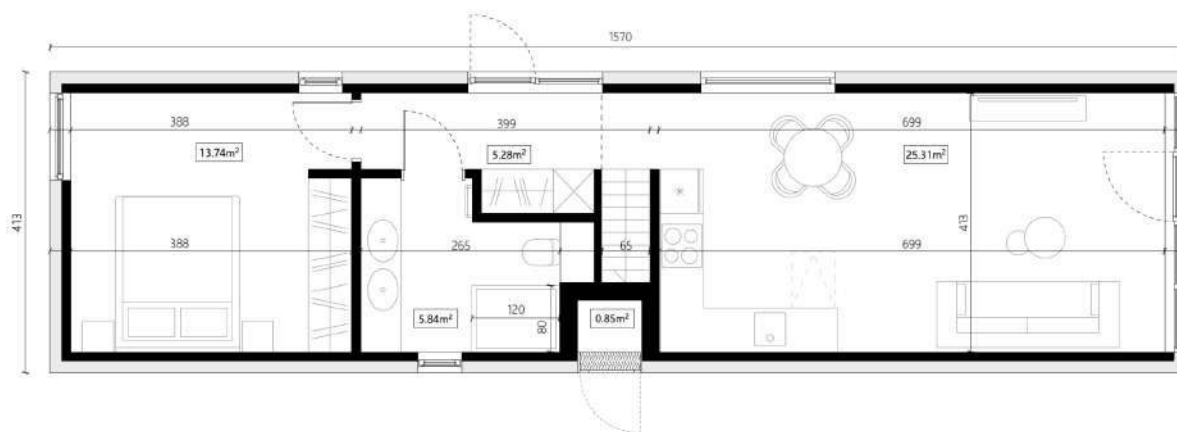
1

1

1
**gable
roof**

**facade:
-wood
-steel**

**all - year
product**

1


room	area m ²
living room with the kitchenette	25.31 m ²
bedroom	13.74 m ²
hall	5.28 m ²
bathroom	5.84 m ²
usable area	50.17 m ²
+ mezzanine	12.60 m ²
+ technical room	0.85 m ²
internal area	63.62 m ²

TERRY

Dimensions

4,13 x 15,70 x 4,16 m

Building area

64,84 m²

Internal area

51,29 m²

4+2



3



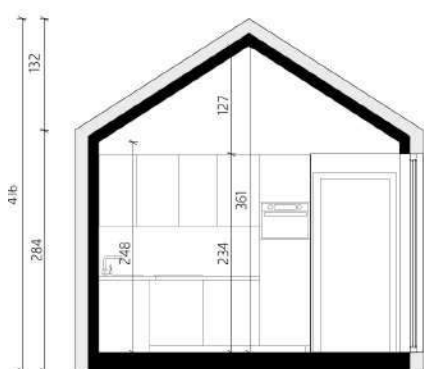
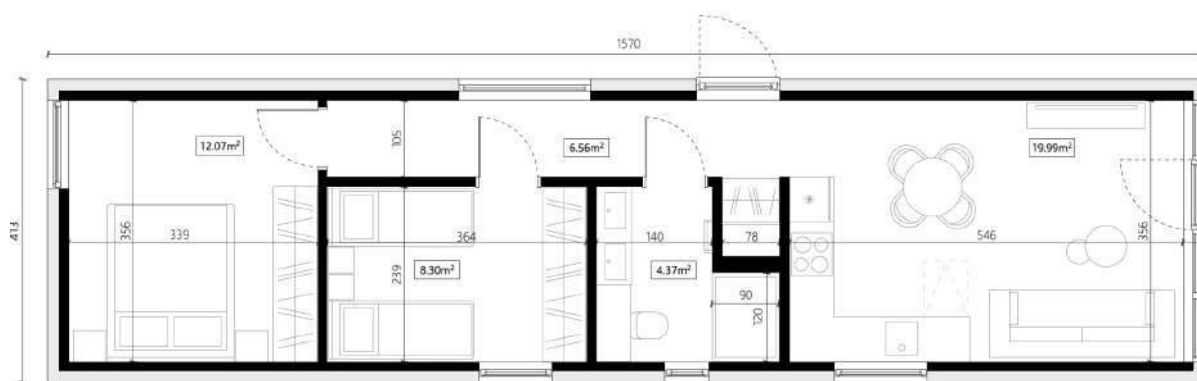
1



1

gable
rooffacade:
-wood
-steelall - year
product

1



room	area m ²
living room with the kitchenette	19.99 m ²
bedroom 1	12.07 m ²
bedroom 2	8.30 m ²
hall	6.56 m ²
bathroom	4.37 m ²
usable area = internal area	51.29 m ²

HENRY

Dimensions

8.18 x 11.96 x 4.04
m

Building area

78,63 m²

Internal area

62.75 m²

5+2



3



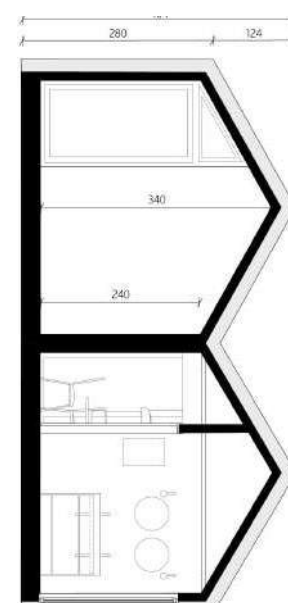
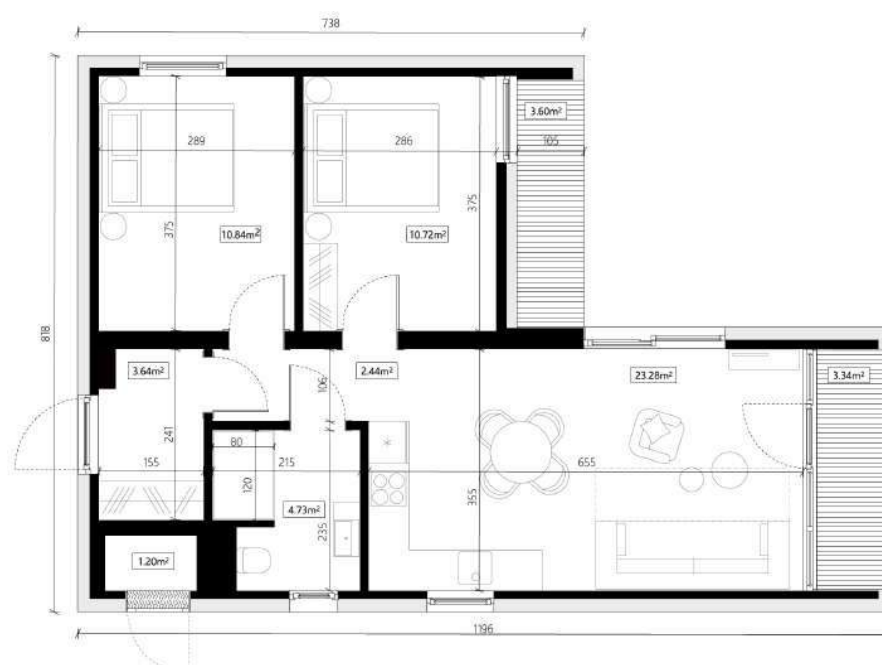
1



1

gable
rooffacade:
-wood
-steelall-year
product

2



room	area m ²	room	area m ²
living room + kitchen	23.28 m ²	vestibule	3.64 m ²
hall	2.44 m ²	usable area	54.61 m ²
bathroom	4.73 m ²	+ technical room	1.20 m ²
bedroom 1	9.80 m ²	+ loggia 1	3.60 m ²
bedroom 2	10.72 m ²	+ loggia 2	3.34 m ²
		internal area	62.75 m ²

Building structure	
Walls	<p>Inside 2x 12.5 mm plasterboard, vapor barrier foil, steel structure with rock wool, thermal insulation made of PIR thermal insulation panels with a high λ coefficient, membrane, substructure and finishing made of panel metal sheet.</p> <p>Internal walls: partition walls in the "drywall" system made of plasterboards on 50-75mm profiles with a two-layer lining made of 12.5mm boards of an appropriate structure (hydro or standard). Internal walls filled with acoustic wool.</p>
Floor	using non-combustible and damp-proof cement chipboard, sufficient rockwool as thermal insulation, finished with laminated flooring. Full trapezoidal sheet metal protection underneath.
Roof	Epdm roofing system according to UK Standart
Construction	The structure of the house is a rigid steel frame, protected by anti-corrosion paint based on resin for environment C3, steel type S355 and S235 (certified steel).
Architecture	
Facade / Roof	Metal sheets, thickness, 0.5 mm, RAL 7016.
	Thermowood
Joinery	Triple-glazed PVC (6-chamber profiles of frames and sashes made of the highest quality PVC, 2-chamber packets of warm glass with a thermal insulation coefficient $U_g = 0.5 \text{ W/m}^2\text{K}$) graphite profiles on the outside, white on the inside, micro ventilation. The applied MB 82 profile; (82 mm depth) Sound insulation: up to 34 dB, additional ribs stiffening the frame and leaf profiles; Warm assembly.
	External doors aluminum or steel (solid leaf), RAL 7016.
	Inside doors white, laminated, adjustable frame, rebate-free, Porta.
Installation	
Electrical installation	Flush-mounted electrical installations: sockets, switches.
	Lighting - light source centrally in each room.
Plumbing	Toilet drain DN-110, Shower drain DN 75.
	Water heater with 50/80l tank powered by electricity .
	Washbasin syphon DN 50 PE/PP.
Finishing	
Walls	Room, bedroom, kitchen – painted, paint acc to RAL; the zone between the kitchen countertop and wall-mounted cabinets: laminated or ceramic tiles/ impregnated pine wood boards with concealed installation, class AB.
	Bathroom – gravel rectified white tiles / wall panel eg. Fibo / impregnated pine wood boards with concealed installation, class AB.
Ceilings	In technical spaces - covering installations suspended ceilings white painted plasterboard.
	Plasterboard ceilings, white painted or board with concealed installation.
Floor	Laminated Floor
Furnishings	
Bathroom	In-built furniture - grey furniture plate (water heater installation hidden above wall-mounted toilet); wash table top - furniture board or black painted steel wash table frame.
	Toilet: ceramic + white toilet slow-board, ceramic toilet, white, over-the-counter mounted, Washbasin faucet, standing, shower tray, shower faucet with rain shower.