

# LR3100 | SLIDING SYSTEM



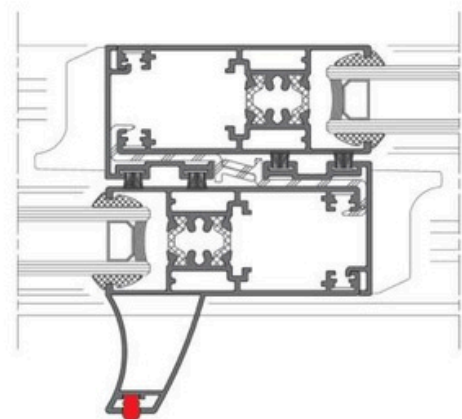
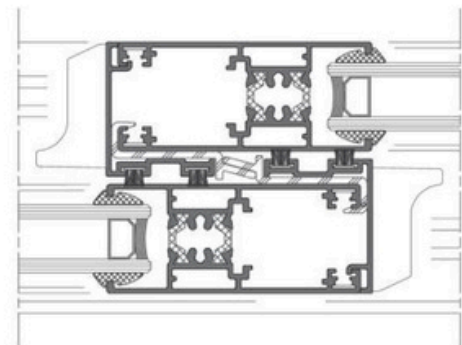
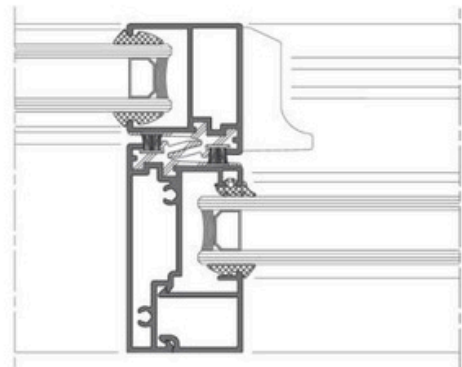
## CHARACTERISTICS THAT REFLECT THE IDENTITY OF THE PRODUCT

- Improved, water resistance air insulation and energy saving
- Production and installation made easy
- Minimal architectural solution with 50 % reduced center seams
- Inside the frame has a uniquely designed mosquito netting system
- Project - friendly custom design options available
- Specially designed high strength multi - point locking system
- Polyamid profiled hollow center detail
- Modern and aesthetic appearance of metal with silver bronze colored anodized surfaces
- Unique concepts and designs utilizing powder coating and wood effects

## TECHNICAL SPECIFICATIONS

SASH WIDTH	: 32 mm
SASH LENGTH	: 75 mm
FRAME LENGTH	: 44 mm
SASH WIDTH OR MIDDLE SASH	: 34 - 78.5 mm
GLASS THICKNESS	: 20 - 22 mm
MAX. SASH LOAD CAPACITY	: 120 kg.
INSULATION BRIDGE	: 20 mm
THERMAL INSULATION	: Uf=3.8 W/m2K

## AVAILABLE FINISHES



# LR3200 | SLIDING SYSTEM



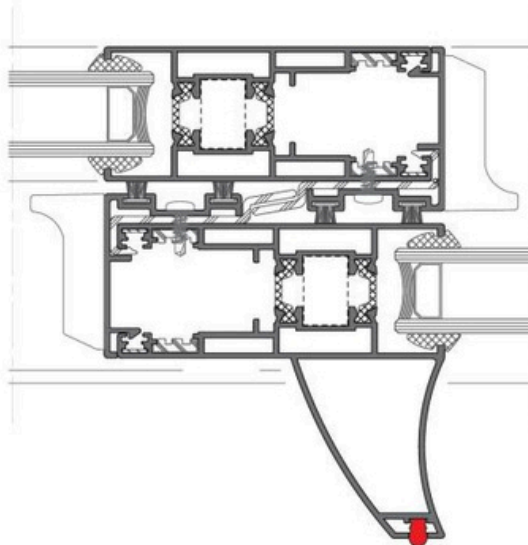
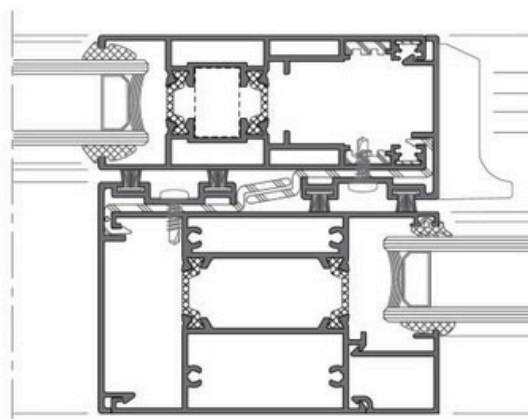
## CHARACTERISTICS THAT REFLECT THE IDENTITY OF THE PRODUCT

- Improved, water resistance air insulation and energy saving
- Production and installation made easy
- Custom steel rail for easy and smooth riding and reduced friction
- Heavy duty bearings
- Applications of single or multiple locks can be mounted inside the sliding door
- Inside the frame has a uniquely designed mosquito netting system
- Project - friendly custom design options available
- Polyamid profiled hollow center detail
- Modern and aesthetic appearance of metal with silver bronze colored anodized surfaces
- Unique concepts and designs utilizing powder coating and wood effects

## TECHNICAL SPECIFICATIONS

SASH WIDTH	: 38 mm
SASH LENGTH	: 92.5 mm
PROFILE THICKNESS	: 1.3 - 1.8 mm
GLASS THICKNESS	: 20 - 26 mm
MAX. SASH LOAD CAPACITY	: 120 kg.
PROFILE GEO. SMOOTHNESS	: EN ISO 12020 -2 Compliant

## AVAILABLE FINISHES



# LR3300 | DREAM SLIDE



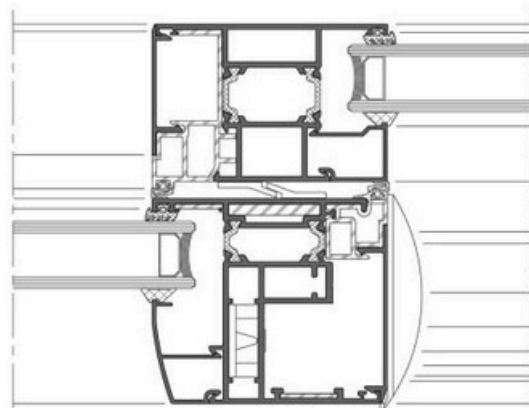
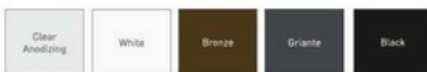
## CHARACTERISTICS THAT REFLECT THE IDENTITY OF THE PRODUCT

- Improved, water resistance air insulation and energy saving
- Enhanced drive and slide speed system
- Decorative and innovative visual design
- Problem - free mechanical solution
- High corrosion and ultraviolet resistance
- Modern and aesthetic appearance of metal with silver bronze colored anodized surfaces
- Unique concepts and designs utilizing powder coating and wood effects

## TECHNICAL SPECIFICATIONS

SASH WIDTH	: 74 mm
SASH LENGTH	: 77 mm
FRAME LENGTH	: 44 mm
THE MIDDLE SASH WIDTH	: 84 mm
GLASS THICKNESS	: 24 - 30 mm
MAX. SASH LOAD CAPACITY	: 250 kg.
INSULATION BRIDGE	: 20 mm

## AVAILABLE FINISHES





# LR3500 | SLIDING SYSTEM



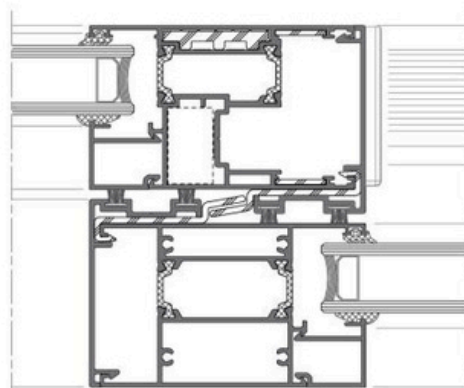
## CHARACTERISTICS THAT REFLECT THE IDENTITY OF THE PRODUCT

- | Improved, water resistance air insulation and energy saving
- | Production and installation made easy
- | The HBSB mechanism has a 250 kg sash carriage with a lift and slide system
- | Suitable for any project, with custom design options available
- | With stainless steel rails and special bearings the rail movement is significantly improved
- | Modern and aesthetic appearance of metal with silver bronze colored anodized surfaces
- | Unique concepts and designs utilizing powder coating and wood effects

## TECHNICAL SPECIFICATIONS

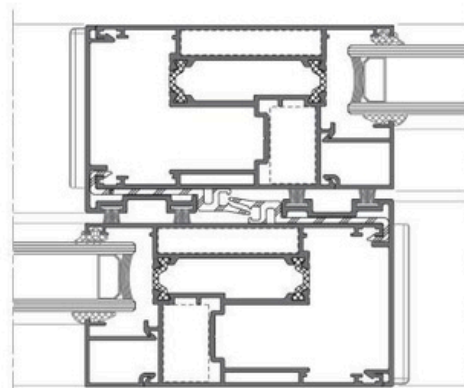
SASH WIDTH	: 57 mm
SASH LENGTH	: 92.5 mm
FRAME LENGTH	: 45 mm
GLASS THICKNESS	: 20 - 45 mm
MAX. SASH LOAD CAPACITY	: 200 kg, 300-400 kg.
INSULATION BRIDGE	: 24 mm

## AVAILABLE FINISHES



250 Kg.  
Capacity

Lift & Slide



300-400 Kg.  
Capacity

Lift & Slide

# LR3700 | MINIMAL SLIDING SYSTEM



## CHARACTERISTICS THAT REFLECT THE IDENTITY OF THE PRODUCT

- Improved, water resistance air insulation and energy saving
- The case and the sash profile are embedded in the wall, which allows you to enjoy views outside even when you are inside your home
- 800 kg sash carrying capacity thanks to the double bearing in each sash.
- Triple glazing applications available
- High thermal and sound performance

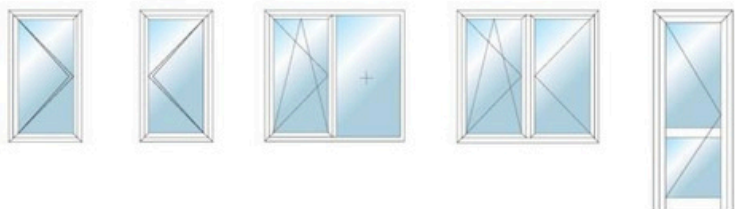
## TECHNICAL SPECIFICATIONS

FRAME WIDTH	: 129 mm
FRAME LENGTH	: 50 mm
SASH WIDTH	: 42 mm
INTERMEDIATE MULLION WIDTH	: 23 mm

## AVAILABLE FINISHES



# LR5100 | OPENING SYSTEM



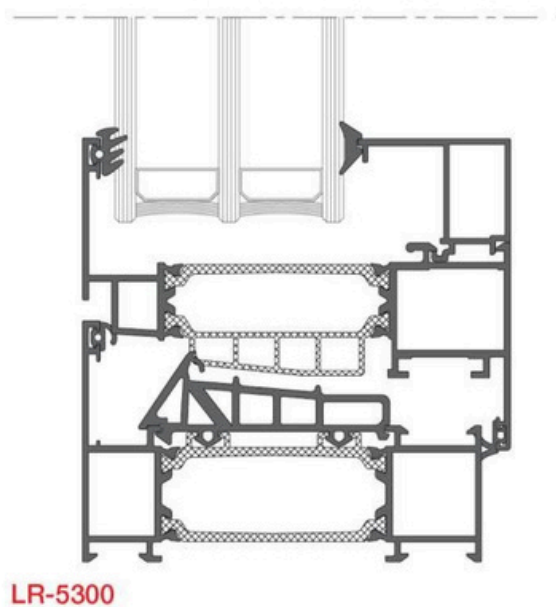
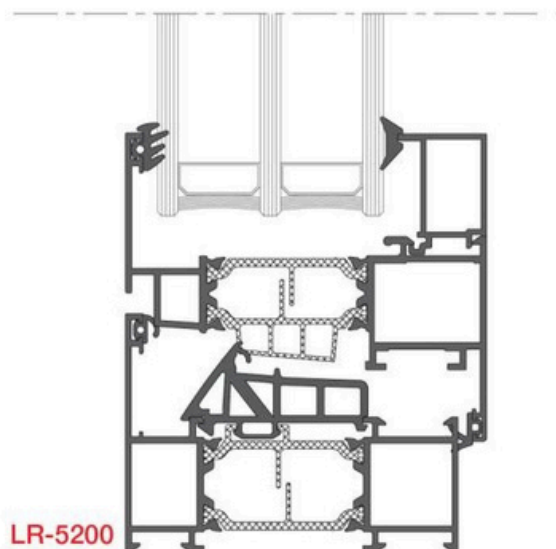
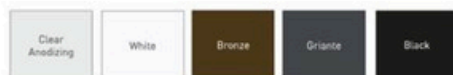
## CHARACTERISTICS THAT REFLECT THE IDENTITY OF THE PRODUCT

- Optimum solutions with wide profile options
- Ability to apply PVC double opening system with standard aluminum double opening system
- Excellent sealing and sound insulation as a result of a combination of casing middle seals and radiant heat insulation barrier
- Specially designed adjustable locking counterparts
- Possibility of better thermal insulation values with different combinations
- Possibility of applying triple glazing and blind glass
- Modern and aesthetic appearance of metal with silver bronze colored anodized surfaces
- Unique concepts and designs utilizing powder coating and wood effects

## TECHNICAL SPECIFICATIONS

SASH WIDTH	: 72 mm
FRAME WIDTH	: 72 mm
FRAME SASH LENGTH (MIN.)	: 90 mm
GLASS THICKNESS	: 16 - 42 mm
MAX. SASH LOAD CAPACITY	: 120 - 200 kg.
INSULATION BRIDGE	: 24 mm
THERMAL INSULATION	: Uf: 2.3 W/m2K

## AVAILABLE FINISHES





# LR6200 | BI-FOLD DOOR



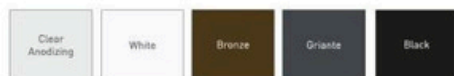
## CHARACTERISTICS THAT REFLECT THE IDENTITY OF THE PRODUCT

- | Possibility to make wide sash thanks to upper bearings
- | Horizontal bearings to prevent rotation of upper bearings
- | Sub-guiding with threshold and recessed threshold
- | Collecting sash 45° and frame 90° casing
- | 147.4 mm profile thickness in the middle sash

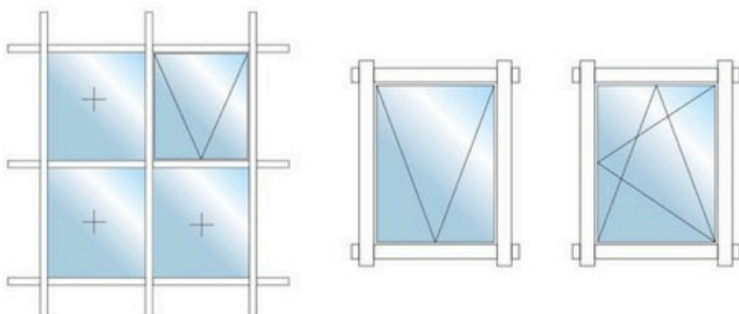
## TECHNICAL SPECIFICATIONS

FRAME WIDTH	: 57 mm
SIDE FRAME HEIGHT	: 47 mm
BOTTOM FRAME HEIGHT	: 47 mm
SASH WIDTH	: 49 mm
SASH LENGTH	: 71 mm

## AVAILABLE FINISHES



## LR9200 | FACADE SYSTEM



### CHARACTERISTICS THAT REFLECT THE IDENTITY OF THE PRODUCT

- | Vertical and horizontal profiles with 50 mm profile width
- | Different profile options according to the height and the opening
- | Stick and cap applications possible
- | Possibility to have window openings
- | Horizontal and vertical applications
- | Applications with a stick closure clip
- | Unlimited color options available



## LR9300 | FACADE SYSTEM

### CHARACTERISTICS THAT REFLECT THE IDENTITY OF THE PRODUCT

- | Vertical and horizontal profiles with 60 mm profile width
- | Different profile options according to the height and the opening
- | Stick and cap applications possible
- | Possibility to have window openings
- | Horizontal and vertical applications
- | 945 mm glass applications possibility
- | Unlimited color options available

### AVAILABLE FINISHES

